



# Meeting Spaces

\*Available September 2017





## RGO Treehouse

Supported with a generous gift from RGO Office Products, the 'Treehouse' is a top-floor meeting and event space wrapped in an arts and design vibe. Featuring three sides of floor to ceiling windows and a panoramic exterior deck offering inspirational, tree-top views to the downtown, ArtPark and mountains. The adjoining non-commercial kitchen can be used for event support and the Hallway Gallery (Floor 4) may be rented in conjunction with this space.

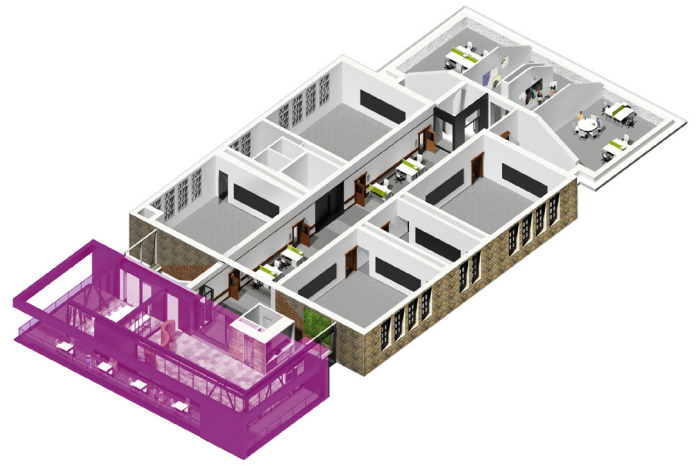
### **Ideal for:**

**/ Intimate events and receptions**

**/ Conferences and retreats**

**/ Speaker series and screenings**

**/ Large workshops and training sessions**



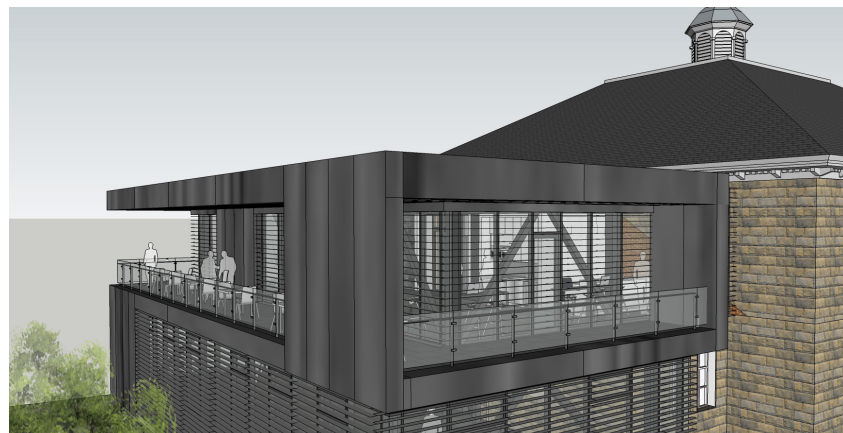
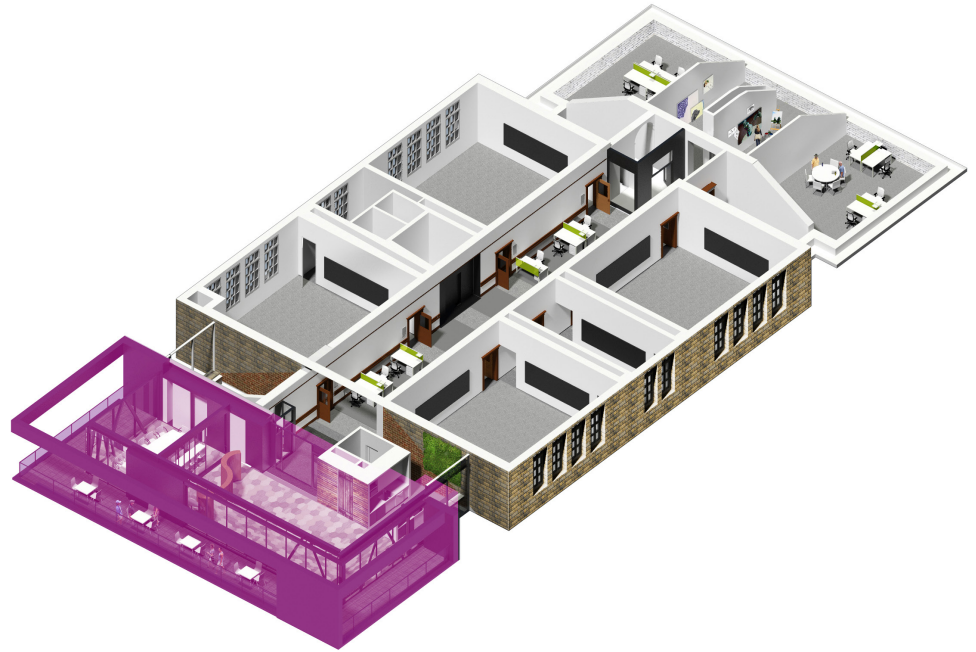
<b>SQ. FOOTAGE:</b>	<b>1,160</b>
<b>MAX OCCUPANCY:</b>	<b>60</b>
<b>CLASSROOM SEATING:</b>	<b>48</b>
<b>BANQUET SEATING:</b>	<b>48</b>

### **Features:**

- 19' by 59' dimensions
- North, South and West facing natural light
- Room darkening blinds
- Adjustable LED lighting
- High speed Wifi and fibre connectivity
- Conference phone
- Portable speakers
- White boards and flip charts
- Projector and screen
- Boardroom tables and chairs
- LED monitors
- Fully accessible
- Raised floor access for concealed data/power runs
- Access to non-commercial kitchen
- Fully accessible



# RGO Treehouse





## RGO Treehouse – North

A versatile meeting and classroom space offering inspiring, tree-top views to the downtown and mountains with access to a non-commercial kitchen, foyer and outdoor deck. The room can accommodate flexible table and seating configurations with room darkening features.

### Ideal for:

- / Board meetings
- / Conferences and retreats
- / Training workshops
- / Classes, small gatherings



<b>SQ. FOOTAGE:</b>	<b>420</b>
<b>MAX OCCUPANCY:</b>	<b>41</b>
<b>BOARDROOM:</b>	<b>12-14</b>
<b>CLASSROOM:</b>	<b>12-16</b>

### Features:

- 19' by 19' dimensions
- North and West facing natural light
- Room darkening blinds
- Adjustable LED lighting
- High speed Wifi and fibre connectivity
- Conference phone
- White boards and flip charts
- LED monitor
- Boardroom tables and chairs
- Fully accessible
- Raised floor access
- Access to non-commercial kitchen
- Coat closet
- Fully accessible



## RGO Treehouse – South

A versatile meeting and classroom space offering inspiring views to the ArtPark and mountains with direct access to a non-commercial kitchen, foyer and outdoor deck. The room can accommodate flexible table and seating configurations with room darkening features.

### Ideal for:

- / Board meetings
- / Conferences and retreats
- / Training workshops
- / Classes, small gatherings



<b>SQ. FOOTAGE:</b>	<b>405</b>
<b>MAX OCCUPANCY:</b>	<b>32</b>
<b>BOARDROOM:</b>	<b>12-14</b>
<b>CLASSROOM:</b>	<b>12-16</b>

### Features:

- 19' by 21' dimensions
- South and West facing natural light
- Room darkening blinds
- Adjustable LED lighting
- High speed Wifi and fibre connectivity
- Conference phone
- White boards and flip charts
- LCD projector
- Projection screen
- Boardroom tables and chairs
- Fully accessible
- Raised floor access
- Access to non-commercial kitchen
- Coat closet
- Fully accessible