

# space MARDALoop



[cspaceprojects.com](http://cspaceprojects.com)

Theatre  
Spaces



# Studio Theatre



> Special Events

> Art Exhibitions & Installations

> Film & Media Screenings

> Artistic Performances & Rehearsals



**SQ. FOOTAGE** – 1,753

**MAX OCCUPANCY** – 150 (STANDING, OR 130 W/AGLC LICENSE)

**THEATRE SEATING** – 138 (RAKED: 60 + FLOOR SEATING 78)

**BANQUET SEATING** – 96

Designed for flexibility and user-friendliness, the two-storey Studio Theatre can be a light-filled event space with a century-old sandstone feature wall or converted to a fully darkened performance space in minutes. Additional versatility comes from retractable seating, a sprung vinyl floor and vertical-drop acoustic wall to divide the space in half. An attached green room with shower and in-room sink provides a catering support area, secure storage, and retiring room for presenters/performers. A rolling bar, green room with shower, lobby and outdoor courtyard may be rented in conjunction with this space (additional charges apply). Book a cSPACE technician and the Studio Theatre can be supported by theatrical lighting, video, sound, and/or livestream and recording systems to unleash its full potential.

## Features

- > 29' by 59' dimensions, 20'0" to grid off finished floor
- > Dedicated control booth available for use with in-house technician
- > Cinema package available including digital laser projector, 20' motorized screen and surround sound\*
- > Livestream and recording packages available\*
- > Wall panels with A/V routing, blinds control, and lighting presets
- > Two storey space with theatrical pipe grid and 15 one-tonne strong points
- > House plot includes multi-colour/multi-zone pre-installed theatrical lighting
- > Integrated surround-sound speakers
- > Technician roster available
- > Retractable raked seating unit with 68 seats
- > Up to 100 lightly padded loose floor chairs
- > Sprung dark-grey vinyl floor
- > Interior sandstone feature wall with coloured LED accent lighting
- > Natural light, black-out blinds and full velour draping



- > Stagetek theatre riser platforms\*
- > 100% LED lit event and performance space
- > Floor boxes for audio/video/microphone and power inputs
- > Motorized acoustic dividing wall
- > Public WiFi or dedicated network available\*
- > Accessible space, including audience listening assist system
- > Podium and mic
- > 3 x wireless lavalier (LAV) mic or handheld wireless mic\*
- > Up to 4 handheld vocal wired or instrument wired mics with stands\*
- > Genie lift (20ft)

Full technical specs available for download on website.

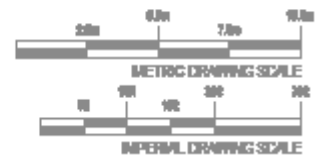
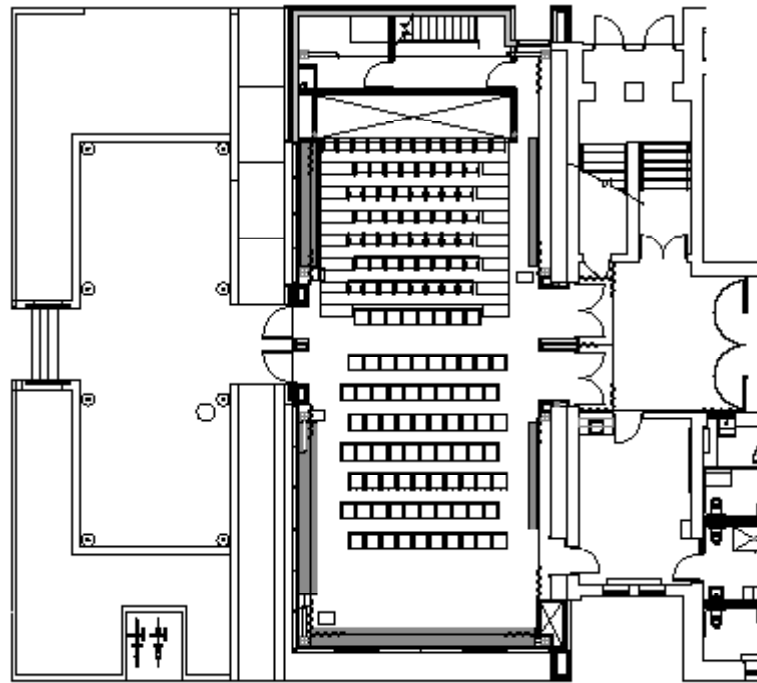
\* Additional charges apply



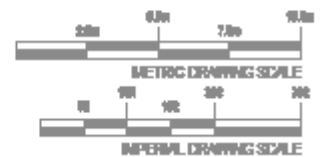
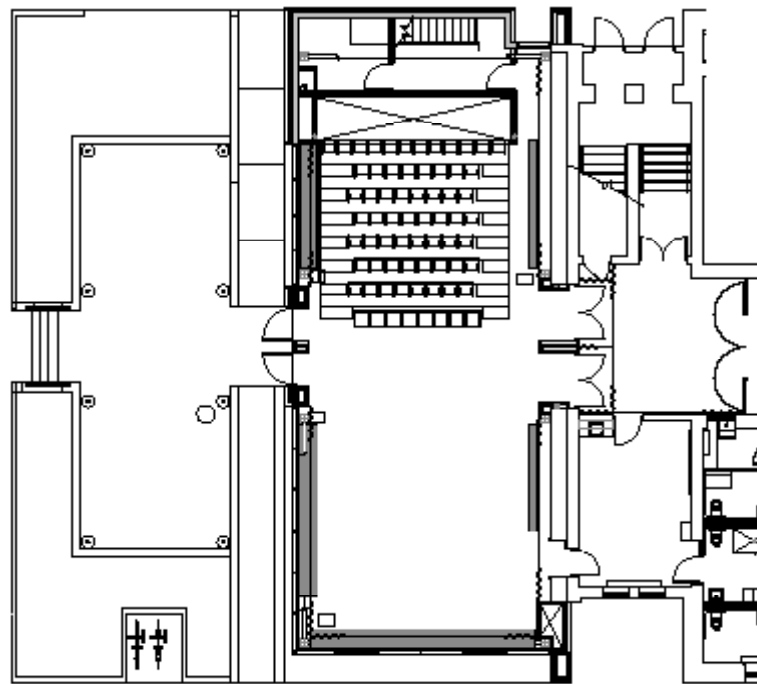


# Typical Seating Plans

**FULL PLAN – 138 SEATS**

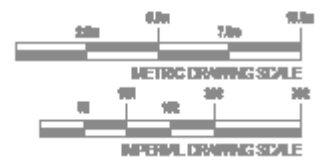
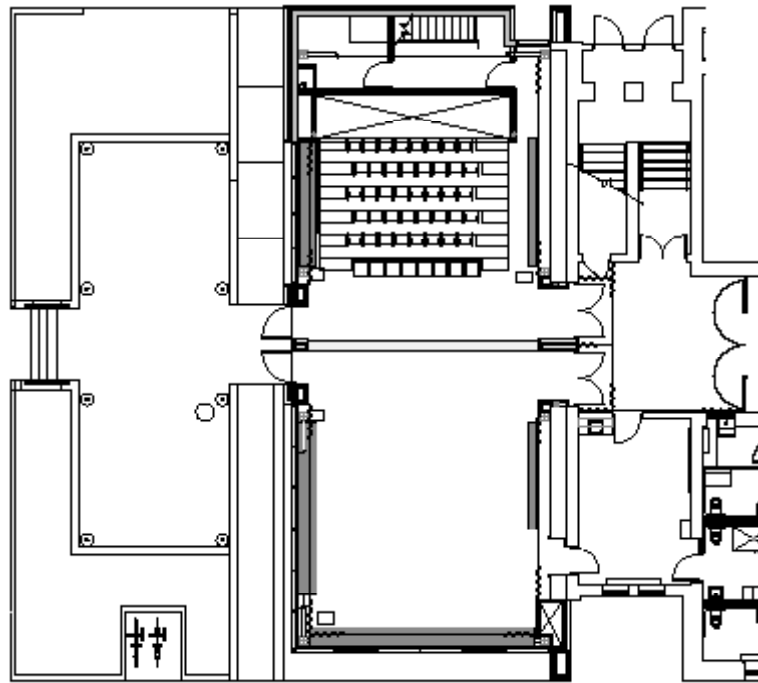


**HALF PLAN – 68 SEATS**

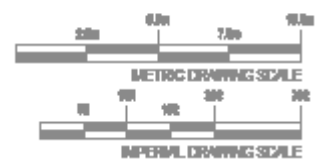
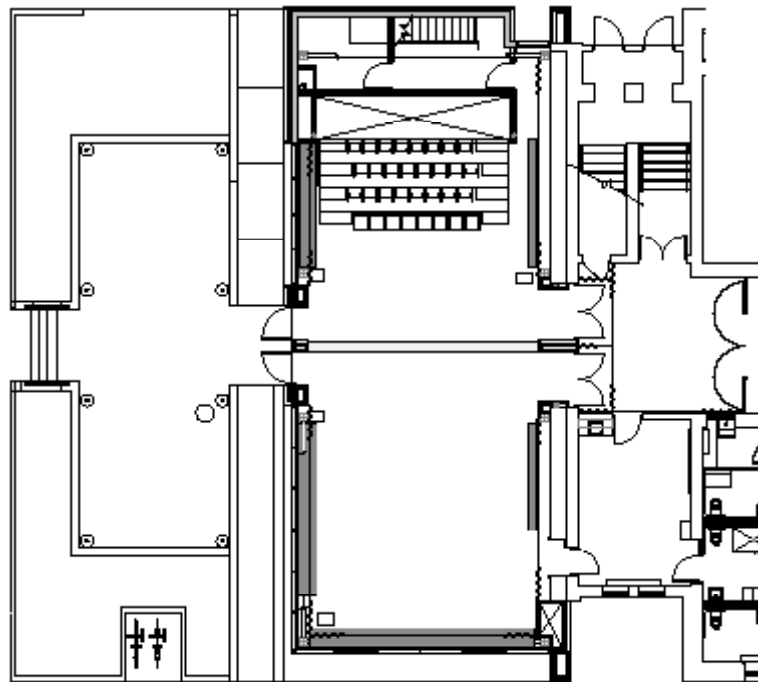




**NORTH PRESENTATION PLAN – 48 SEATS**



**NORTH SCREENING PLAN – 32 SEATS**



# Studio North



➤ Artistic Performances & Rehearsals

➤ Art Exhibitions & Installations

➤ Film & Media Screenings

➤ Special Events



**SQ. FOOTAGE** – 726

**MAX OCCUPANCY** – 90 (STANDING)

**THEATRE SEATING** – 48

**BANQUET SEATING** – 32

4 TABLES OF 8 PERSONS

LOOSE/CUSTOM SEATING AS REQUIRED

Studio North offers most of the great amenities and value that is listed in the full space configuration, just in half the space. Access to our tech booth and retractable seating makes this a highly technical but intimate performance, presentation and rehearsal space. Outdoor courtyard access.



## Features

- > 29' by 23' dimensions, 20'0" to grid off finished floor
- > Dedicated control booth available for use with in-house technician\*
- > Theatrical pipe grid and 6 one-tonne strong points
- > Theatre lighting instruments
- > Retractable raked seating (up to 48)
- > Sprung dark-grey vinyl floor
- > Interior sandstone feature wall with coloured LED
- > Natural light, black-out blinds and velour draping
- > 100% LED lit event and performance space
- > Stagetek theatre riser platforms available
- > Cinema package available including digital laser projector\*
- > Floorboxes for audio/video/microphone inputs
- > LAV/hand mics and podium\*
- > 30' cocktail tables available (10)\*
- > Public WiFi/fibre data connections
- > Full technical support available
- > Fully accessible including audience listening assist

\* Additional charges apply



# Studio South



➤ Artistic Performances & Rehearsals

➤ Art Exhibitions & Installations

➤ Film & Media Screenings

➤ Special Events



**SQ. FOOTAGE** – 1,026

**MAX OCCUPANCY** – 127 (STANDING)

**THEATRE SEATING** – 77

**BANQUET SEATING** – 48

6 TABLES OF 8 PERSONS

LOOSE/CUSTOM SEATING AS REQUIRED

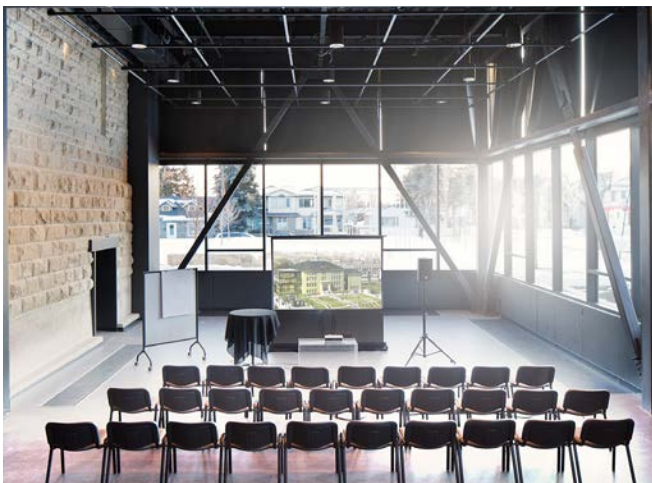
Studio South offers both an inspiring and sun-filled event space looking onto the park and a full 'black box' environment for rehearsals and small performances with non-fixed seating. Direct access to the green room and outdoor courtyard allows for additional versatility.



## Features

- > 29' by 38' dimensions, 20'0" to grid off finished floor
- > Preset lighting available
- > Theatrical pipe grid and 9 one-tonne strong points
- > Theatre lighting instruments
- > Loose theatre seating (up to 70)
- > Sprung dark-grey vinyl floor
- > Interior sandstone feature wall with coloured LED
- > Natural light, black-out blinds and velour draping
- > 100% LED lit event and performance space
- > Stagetek theatre riser platforms available
- > Floorboxes for audio/video/microphone inputs
- > Motorized acoustic demising wall
- > LAV/hand mics and podium
- > 30' cocktail tables available (10)\*
- > Public WiFi/fibre data connections
- > Full technical support available\*
- > Fully accessible including audience listening assist

\* Additional charges apply



# Location

cSPACE Marda Loop is an arts hub, innovative venue and coworking space, centrally located in a vibrant arts friendly neighbourhood, close to 17th Ave and Marda Loop.

With free parking, cycling infrastructure like bike racks and showers, convenient access to public transit, cSPACE is a centrally located hub connected easily to the rest of the city.



C-TRAIN STATION

6 7 107 13

BUS ROUTES



**cspace** **MARDA LOOP**

1721 29th Ave SW  
cspaceprojects.com

## Studio Theatre – 2023 Rental Rates

Full Studio Theatre incl. Green Room	Non-profits & Artist	Individual & Corporate
8 hours (8am-10pm)	\$550	\$1650
Daytime 4 hour (8am-4pm)	\$275	\$825
Additional hour	\$100	\$200
Celebration package	see brochure	see brochure
Studio North	Non-profits & Artist	Individual & Corporate
8 hours (8am-10pm)	\$225	\$625
Daytime 4 hour (8am-4pm)	\$125	\$370
Additional hour	\$45	\$130
Studio South	Non-profits & Artist	Individual & Corporate
8 hours (8am-10pm)	\$325	\$975
Daytime 4 hour (8am-4pm)	\$180	\$535
Additional hour	\$65	\$195